

Three Dimensional Conformal Radiotherapy and Androgen Deprivation Therapy in Patients with Clinically Localized Prostate Cancer; Hacettepe University Experience

Yurday OZDEMİR^{1,2}, Fadil AKYOL¹, Gokhan OZYIGIT¹, Pervin HURMUZ¹,
Cem ONAL², Ugur SELEK³, Erdem KARABULUT⁴

¹ Hacettepe University Faculty of Medicine, Department of Radiation Oncology, Ankara

² Başkent University Faculty of Medicine, Department of Radiation Oncology, Adana

³ Koç University Faculty of Medicine, Department of Radiation Oncology, İstanbul

⁴ Hacettepe University Faculty of Medicine, Department of Biostatistics, Ankara, TURKEY

ABSTRACT

The aim of this study is to evaluate the treatment results of three dimensional conformal radiotherapy (3DCRT) and androgen deprivation therapy (ADT) in patients with clinically localized prostate cancer (CLPC). Between June 1998 and December 2011, 577 patients with the diagnosis of CLPC were treated. ADT was started 3 months prior to radiotherapy (RT). 3DCRT was delivered to prostate and the seminal vesicles (SV) to a total dose of 70Gy. Additionally, patients with lymph node (LN) positivity received 50.4Gy RT to pelvic LN's. Median follow up time was 65 months. Five-ten years overall survival (OS), cause specific survival (CSS), PSA relapse-free survival (PSA-RFS) and distant metastasis-free survival (DMFS) rates were 92-74%, 97-91%, 77-55% and 94-88%, respectively. OS was negatively affected from LN positivity ($p < 0.001$). In the subgroup of patients with $GS \geq 8$, there was no significant difference between < 1 years and ≥ 1 years of ADT in terms of CSS, PSA-RFS and DMFS. OS was better in patients with < 1 years of ADT ($p = 0.01$). Five year OS ($p = 0.02$), CSS ($p = 0.05$), PSA-RFS ($p = 0.01$) and DMFS ($p = 0.07$) rates were inferior in the high risk group patients that used ADT ≥ 1 year. Acute and late RTOG grade III/IV gastrointestinal system toxicity rates were 1.7% and 5% and acute and chronic RTOG grade III/IV genitourinary system toxicity rates were 1.4% and 5%, respectively. 3DCRT and ADT combination is an effective treatment modality with acceptable toxicities in patients with clinically localized prostate cancer.

Keywords: Prostate cancer, Conformal radiotherapy, Androgen deprivation therapy

ÖZET

Lokalize Prostat Kanseri Olgularda Üç Boyutlu Konformal Radyoterapi ve Total Androjen Blokajı; Hacettepe Üniversitesi Deneyimi

Bu çalışmanın amacı, üç boyutlu konformal radyoterapi (3BKRT) ve total androjen blokajı (TAB) lokalize prostat kanserli olgularımızdaki tedavi sonuçlarımızı değerlendirmek. Haziran 1998 ve Aralık 2011 tarihleri arasında lokalize prostat kanseri tanısıyla 577 olgu tedavi edildi. TAB tedavisine radyoterapiden (RT) 3 ay sonar başlandı. 3BKRT olarak prostat ve seminal veziküllere toplam 70 Gy uygulandı. Ek olarak lenf nodu (LN) tutulumu olan olgularda pelvis LN'larına 50.4 Gy uygulandı. Ortanca izlem süresi 65 aydır. Beş-on yıllık genel sağkalım (GS), hastalığa özgü sağkalım (HSS), PSA-relapsız sağkalım (PSA-RFS) ve uzak metastazsız sağkalım (DMFS) oranları sırasıyla %92-74, %97-91, %77-55 ve %94-88 bulundu. LN tutulumu GS'ı olumsuz etkilemiştir ($p < 0.001$). Gleason skoru ≥ 8 olan olgularda < 1 yıl ile ≥ 1 yıl TAB kullanımı arasında HSS, PSA-RFS ve DMFS açısından fark yoktu. Ancak < 1 yıl TAB kullananlarda GS daha iyiydi ($p = 0.01$). Yüksek riskli grupta olup ≥ 1 yıl TAB kullanan hastalarda 5 yıllık GS ($p = 0.02$), HSS ($p = 0.05$), PSA-RFS ($p = 0.01$) ve DMFS ($p = 0.07$) daha düşük bulundu. Erken ve geç dönem RTOG grad III/IV gastrointestinal sistem toksisite oranları %1.7 ve %5 bulundu. Erken ve geç dönem RTOG grad III/IV genitouriner sistem toksisite oranları %1.4 ve %5 bulundu. Lokalize prostat kanseri tedavisinde 3BKRT ve TAB tedavisi etkili ve güvenli bir tedavi biçimidir.

Anahtar Kelimeler: Prostat kanseri, Konformal radyoterapi, Androjen deprivasyon tedavisi

INTRODUCTION

Treatment options for patients with clinically localized prostate cancer include active surveillance, radical prostatectomy or radiotherapy (RT) with or without androgen deprivation treatment (ADT). The treatment decision is made according to risk group of the patient. Although there is no randomized study comparing RT with surgery various studies demonstrated that RT is equally effective with surgery in the treatment of clinically localized prostate cancer. Its effect improves when the dose delivered to target is increased. Three dimensional conformal radiotherapy (3DCRT) techniques provide the delivery of higher doses to the target while sparing the adjacent normal structures. Additionally, RT and ADT have been shown to improve overall survival (OS), PSA relapse free survival (PSA-RFS) and distant metastasis free survival (DMFS)¹⁻³ compared to RT alone. Thus RT with ADT is the standard of care for localized prostate cancer in intermediate and high risk patients.

In this study we aimed to evaluate our treatment results in patients with clinically localized prostate cancer and identify the factors that had might affect the prognosis of the patients.

PATIENTS AND METHODS

Between June 1998 and June 2011, 577 patients with the diagnosis of clinically localized prostate adenocarcinoma were treated according to our institutional treatment protocol. ADT consisted of LHRH analogue plus antiandrogen. ADT was started 3 months prior to RT and was continued according to the D'Amico risk group of the patient at the initial diagnosis. The work up studies included initial PSA (iPSA), Gleason Score (GS), transrectal USG or prostat MRI, abdominopelvic computerized tomography (CT) and Tc-99m bone scintigraphy.

Clinical target volume was defined as the prostate gland and the entire seminal vesicles (SV). Total dose of 70 Gy was delivered to 95% isodose. Thus, the dose at the International Commission of Radiation Units and Measurement (ICRU) point was 73.6 Gy. Twenty nine patients with LN positivity received RT to pelvis (50.4 Gy) plus prostate and

SV (70 Gy). ADT was used ≥ 1 year in 38% of the patients. We used 7 fields to deliver the dose to the prostate and SV. The doses for adjacent normal structures were kept below the tolerance limits of each organ; V70<35% and V40<50% for bladder, V70<20% and V40<40% for rectum, and V50<5% for femoral heads.

The patients were followed up every 3 months for the first 2 years, every 6 months for the next 3 years and annually thereafter. Follow up included routine physical examination, hemogram, liver function tests, PSA and transrectal USG.

OS, prostate cancer specific survival (CSS), PSA-RFS, DMFS were assessed in relation to GS (GS 2-6, GS 7, GS 8-10), iPSA (PSA \leq 10, 10< PSA \leq 20, PSA> 20), total percentage of cancer containing cores (TPC), percent of positive cores (PPC) (and perineural invasion (PNI) status. TPC was defined as the division of total tumor percentage of cancer containing cores with number of total cores, multiplied by 100. PPC was defined as the number of biopsy cores with cancer cells divided by the total number of cores, multiplied by 100.⁴ The patients were grouped as TPC< %50 or \geq %50 and PPC \leq %50 or >%50. PNI was defined as the presence of prostate cancer cells within the spaces along the prostatic nerves.⁵ Patients with T1-2a and PSA \leq 10 ng/ml and GS 2-6 were categorized as low risk, T2b and 10< PSA \leq 20 and GS 7 as intermediate risk and T2c-T4 or PSA> 20 ng/ml and GS 8-10 as high risk groups according to D'Amico classification.⁶ Acute and late treatment related toxicities were also evaluated using RTOG Acute Radiation Morbidity Scoring Criteria and RTOG/EORTC Late Radiation Morbidity Scoring Schema.

Statistics

SPSS 16.0 (SPSS Inc., Chicago, IL) version was used for the statistical analysis. The value of p< 0.05 was used to determine statistical significance. Time to last follow-up, biochemical failure and distant metastases were calculated starting from the final date of 3DCRT. Kaplan-Meier test was used to estimate all survival probabilities and hazard rates. Evaluation of prognostic factors was done by Log-rank test for univariate analysis and Cox regression for multivariate analysis.

RESULTS

Median follow up time was 65 months (range, 3-169 months). There were 29 patients with lymph node (LN) involvement and 8 of them had pathological confirmation of LN positivity. The characteristics of the patients were summarized in Table 1. PNI status was reported in 520 (90%) patients and it was positive in 36.5% of the cases. PPC and TPC status were reported in 445(77%) and 428 (74%) patients, respectively. The percentage of patients with PPC > 50% was 40% and TPC ≥ 50% was 25.5%. The characteristics of patients according to PPC and TPC status were listed in Table 2. Both high PPC and TPC were correlated with higher PSA, GS, clinical T stage, higher risk group, PNI positivity and increased ADT duration (p < 0.001). Patients with PPC > %50 and TPC ≥ %50 were tended to be younger than patients with PPC ≤ %50 and TPC < %50 (p < 0.004 and p < 0.001, respectively). PNI positivity didn't correlate with patient age (p = 0.28).

Overall Survival

Five and 10 years OS rates for entire cohort were 92% and 74% respectively. According to T stage of the patients, there was no difference in OS. Five and 7 year OS rates in LN (+) and LN (-) groups were 69 and 55% and 97 and 92%, respectively (p < 0.001). When the patients were analyzed according to the GS groups, 5-10 year OS rates were 93 and 82% in GS ≤ 6 group; 95 and 72% in GS 7 group. The patients with GS ≥ 8 had 5 and 10 year OS rates of 87 and 59% that were significantly lower than GS ≤ 6 (p = 0.008) and GS 7 (p = 0.027) groups. There was no significant difference in OS between GS ≤ 6 and GS 7 patient groups (p = 0.89). Five and 10 year OS rates in the PSA ≤ 10 ng/ml, PSA 10-20 ng/ml and PSA > 20 ng/ml groups were 95 and 84%, 87 and 69%, 91 and 65%, respectively. OS rates in the PSA ≤ 10 ng/ml group were significantly higher than PSA 10-20 ng/ml (p = 0.002) and PSA > 20 ng/ml groups (p = 0.008). However there was no difference in OS between the latter two groups (p = 0.64). OS rates in low risk patients were higher than intermediate (p = 0.005) and high risk patients (p = 0.002). PNI (+) patients had 5-10 year OS rates of 89 and 60% compared to 94 and

Table 1. The characteristics of 577 patients

Patient characteristics	Number (%)
Median Age (range)	68 years (41-87 years)
iPSA (Ω)	
≤ 10 (ng/ml)	209 (36.2)
10-20 (ng/ml)	158 (27.4)
> 20(ng/ml)	189 (32.8)
Gleason Score (Ω)	
≤ 6	245(42)
7	166(29)
≥ 8	166(29)
Clinical T stage (Ω)	
T1-T2a	285 (49)
T2b	46(8)
T2c-T4	238 (41)
PNI status (Ω)	
PNI(+)	211(36.5)
PNI (-)	309 (53.5)
PPC status (Ω)	
PPC ≤ 50 %	216(37)
PPC > 50%	229 (40)
TPC status (Ω)	
TPC < 50%	280(48.5)
TPC ≥ 50%	148 (25.5)
D'Amico Risk Group (Ω)	
Low	97 (16.8)
Intermediate	118 (20.5)
High	359 (62.2)
ADT < 1 year (Ω)	311 (54)
ADT ≥ 1 year	218 (38)

Abbreviations: PPC= percent of tumor positive cores; TPC=total percentage of cancer containing cores; iPSA= initial prostate specific antigen; PNI= perineural invasion; ADT= androgen deprivation therapy; (Ω) = Not available in all patients due to missing data

79% in PNI (-) patients (p = 0.06). Presence of TPC ≥ 50% and PPC > 50% were not a predictor for OS (p = 0.9 and p = 0.1, respectively). In the multivariate analyses only LN positivity significantly decreased OS (p = 0.01).

Prostate Cancer Specific Survival

Twenty four patients died because of prostate cancer. CSS at 5 and 10 years were 97% and 91%. On univariate analysis, CSS rates in T2c-T3b groups were worse than T1-T2a groups (p = 0.004) but not different from T2b patients (p = 0.48). LN positive

Table 2. Patient characteristics by PPC and TPC status

PPC ≤ %50 n (%)	PPC > %50 n (%)	p	TPC < %50 n (%)	TPC ≥ %50 n (%)	p
Mean Age	68.3	66.3	<0.004	68.2	<0.00
iPSA Group					
≤10 (ng/ml)	110 (%53)	54 (%24)		132 (%50)	28 (%19)
10-20 (ng/ml)	51 (%24)	74 (%33)	<0.00	73 (%27)	49 (%33)
>20 (ng/ml)	47 (%23)	97 (%43)		62 (%23)	70 (%48)
Gleason Score					
≤6	115 (%53.5)	62 (%27)		149 (%53)	20 (%14)
7	63 (%29.3)	69 (%30)	<0.00	82 (%29)	43 (%29)
≥8	37 (%17.2)	98 (%43)		49 (%18)	85 (%57)
PNI (+)	53 (%25)	135 (%62)	<0.00	88 (%32)	104 (%74)
PNI (-)	160 (%75)	83 (%38)		186 (%68)	37 (%26)
Clinical Stage					
T1-T2a	132 (%61)	80 (%35)		168 (%60)	38 (%26)
T2b	18 (%9)	18 (%8)	<0.00	19 (%7)	13 (%9)
T2c-T4	65 (%30)	128 (%57)		93 (%33)	65 (%65)
D'Amico Risk					
Low	56 (%26)	15 (%6)		68 (%24)	4 (%3)
Intermediate	56 (%26)	32 (%14)	<0.00	70 (%25)	12 (%8)
High	103 (%48)	182 (%80)		142 (%51)	131 (%89)
ADT < 1 year	142 (%70)	89 (%41)	<0.00	173 (%65)	53 (%38)
ADT ≥ 1 year	62 (%30)	128 (%59)		92 (%35)	87 (%62)

Abbreviations: PPC= percent of positive cores; TPC=total percentage of cancer containing cores; iPSA=initial prostate specific antigen; PNI= perineural invasion; ADT= androgen deprivation therapy

patients had worse CSS than LN negative patients ($p= 0.008$). GS, PSA, D'Amico risk groups, TPC, PPC and PNI were all significantly associated with CSS rates (Table 3 and Figure 1). Patients with GS ≥ 8 had significantly poor survival than GS 7 ($p= 0.015$) and GS ≤ 6 patients ($p < 0.001$). Survival was worse in patients with GS 7 compared to GS ≤ 6 patients ($p= 0.08$). CSS in patients with PSA ≤ 10 ng/ml was better than the subsequent PSA groups ($p= 0.01$ and $p < 0.001$, respectively). Patients with PSA 10-20 ng/ml had better CSS compared to patients with PSA > 20 ng/ml ($p= 0.04$). D'Amico high risk patients had worse CSS rates than low and intermediate risk patients (Table 3). Higher TPC and PPC and presence of PNI were all related to poor CSS (Figure 1).

PSA Relapse Free Survival

One hundred thirty five PSA relapses were reported. Five and 10 years PSA-RFS rates were 77%

and 55% and median PSA relapse free period was 54.5 months. We found a significant difference between T1a-T2a and T2c-T3b groups in favour of T1a-T2a group ($p= 0.003$). Five year PSA-RFS rates in the LN positive and LN negative patients were 52% and 78%, respectively ($p= 0.001$). The 5 and 10 year PSA-RFS rates in three GS groups were shown in Table 4. There was no significant difference in terms of PSA-RFS between GS ≤ 6 and GS 7 groups ($p= 0.15$). Patients with GS ≥ 8 had significantly worse PSA-RFS than patients with either GS ≤ 6 ($p < 0.001$) or GS 7 ($p= 0.002$).

PSA-RFS is affected from the increasing PSA levels. 5-10 year PSA-RFS rates in PSA ≤ 10 ng/ml, PSA 10-20 ng/ml and PSA > 20 ng/ml groups were; 88% and 74%, 79% and 46%, and 62% and 40%, respectively. PSA-RFS rate in the PSA > 20 ng/ml group was significantly worse compared to PSA 10-20 ng/ml group ($p= 0.007$) and PSA ≤ 10 ng/ml group ($p < 0.001$).

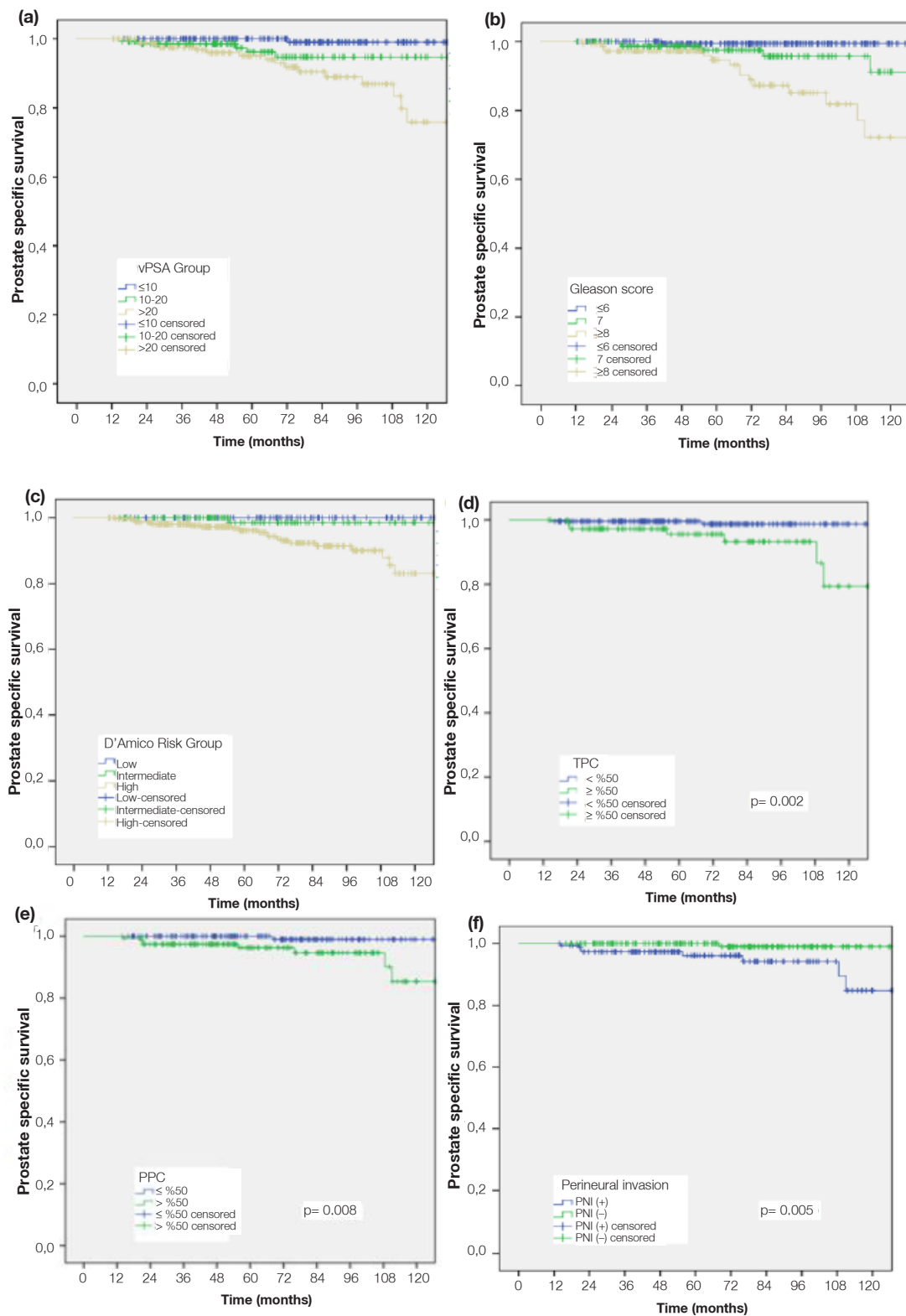


Figure 1. Prostate cancer specific survival curves according to (a) initial prostate specific antigen (vPSA), (b) Gleason score (GS), (c) D'Amico risk groups, (d) total percentage of cancer containing cores (TPC), (e) percent of positive cores (PPC), (f) perineural invasion (PNI) status.

Five year PSA-RFS rates in the low, intermediate and high risk disease groups were 93%, 77% and 72%, respectively. Patients in the high risk disease group had worse PSA-RFS compared to low risk ($p < 0.001$) and intermediate risk groups ($p < 0.001$).

Five-10 year PSA-RFS rates were 60% and 42% in the $TPC \geq 50\%$ group and 86% and 68% in the $TPC < 50\%$ group ($p < 0.001$); 65% and 44% in the $PPC > 50\%$ group and 89% and 85% in the $PPC \leq 50\%$ group, respectively ($p < 0.001$). PNI status was also predictive in terms of PSA-RFS ($p = 0.005$).

In the multivariate analysis, iPSA levels ($p < 0.001$), LN status ($p = 0.001$), TPC ($p = 0.04$) and PPC ($p = 0.05$) were found to be significantly affecting the PSA-RFS. Additionally, patients with LN positive disease had 3.8 times increase in the rate of PSA relapse compared to LN negative patients. Compared to patients with $PSA \leq 10$ ng/ml; PSA relapse rates were increased 2 times in patients with $PSA 10-20$ ng/ml and 3.5 times in patients with $PSA > 20$ ng/ml.

Distant Metastasis Free Survival

There were 37 distant metastases. Fifty percent of the patients had no metastases until 65.9 months in their follow up. The patients with T2c-T3b had more distant metastases compared to T1a-T2a patients ($p = 0.007$). Five and 10 year DMFS rates in the LN positive and LN negative groups were 82% and 66.5% and 96% and 95%, respectively ($p < 0.001$).

Five and 10 year DMFS rates according to GS are shown in Table 4. Patients in $GS \geq 8$ group had significantly worse DMFS compared to patients in $GS 7$ ($p = 0.001$) and $GS \leq 6$ groups ($p = 0.001$).

Patients with $PSA \leq 10$ ng/ml had 5 and 10 year DMFS rates of 98% and 97%; patients with $PSA 10-20$ ng/ml had 5 and 10 year DMFS rates of 95% and 90% ($p = 0.05$). Patients with $PSA > 20$ ng/ml had 5 and 10 years DMFS rates of 89% and 77%, respectively. Thus, patients with $PSA > 20$ ng/ml had worse DMFS compared to patients with $PSA \leq 10$ ng/ml ($p < 0.001$) and $PSA 10-20$ ng/ml ($p = 0.05$).

Patients in the low and intermediate risk groups did not have significant difference in DMFS ($p =$

0.15). However, patients in the high risk group had worse DMFS rates compared to intermediate risk ($p = 0.04$) and low risk groups ($p = 0.004$).

Five and 10 year DMFS in the $TPC \geq 50\%$ group were 88% and 66% compared to 98% in the $TPC < 50\%$ group ($p < 0.001$). Five-10 year DMFS in the $PPC > 50\%$ group were 90%-81% in compared to 98% in $PPC \leq 50\%$ group ($p < 0.001$). Patients with PNI had worse DMFS than PNI negative patients ($p = 0.03$).

In the multivariate analysis, LN positivity ($p = 0.001$) and $TPC \geq 50\%$ ($p = 0.05$) were shown to increase the risk of distant metastasis. Patients with $GS \geq 8$ had significantly risk of distant metastasis compared to patients with $GS \leq 6$ ($p = 0.01$).

Androgen Deprivation Therapy

Seventy nine percent of patients that used ≥ 1 year ADT and 53% of the patients that used < 1 year ADT were in the D'Amico high risk group. Although 44% and 47% of the patients that used long term ADT were the patients with $GS \geq 8$ and $PSA > 20$ ng/ml; these rates were only 19% and 24% in < 1 year ADT used patients, respectively. Only 11% and 61% of the group used ADT for ≥ 2 years and ≥ 1 year respectively

In the whole group 5 and 10 years OS rates in patients that used ADT < 1 year were 99.5% and 90.6% compared to 94% and 90% in group of patients that used ADT ≥ 1 year ($p = 0.03$). In the subgroup of patients with $GS \geq 8$, there was no significant difference between < 1 years and ≥ 1 years of ADT in terms of CSS ($p = 0.3$), PSA-RFS ($p = 0.15$) and DMS ($p = 0.4$). However OS was better in patients with < 1 year ADT (Figure 2) ($p = 0.01$). Five and 10 years OS rates were 100% and 53% in short term ADT used group; 94% and 66% in long term ADT used group.

In the high risk patients, 5 years OS ($p = 0.02$), CSS ($p = 0.05$), PSA-RFS ($p = 0.01$) and DMFS ($p = 0.07$) rates were better in patients that used ADT < 1 years.

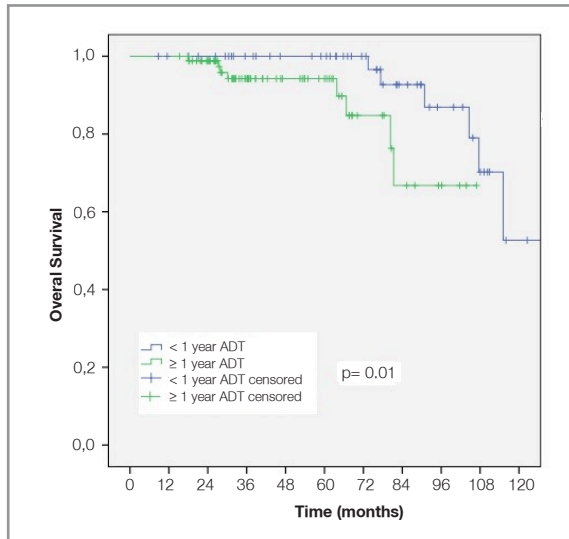


Figure 2. Overall survival in Gleason 8-10 patients according to the ADT duration.

Toxicity

RT related acute toxicities were evaluated using RTOG Acute Radiation Morbidity criteria and late toxicities were evaluated using RTOG/EORTC Late Radiation Morbidity scoring schema.⁷ The data about toxicity of gastrointestinal and genitourinary systems were available 83% and 85% of the patients, respectively. The treatment was well tolerated with few grade 3 toxicities. Acute grade 3 genitourinary and gastrointestinal toxicities were reported in 1.4% and 1.7% of cases. Twenty five late grade 3 gastrointestinal toxicities were reported (5%). These patients had gastrointestinal (GIS) haemorrhage that was required argon laser therapy. Only 1 patient had faecal incontinence as grade 3 toxicity. Twenty eight (6%) patients had RTOG grade 3 genitourinary (GUS) toxicities due to radiation stricture that needed minimally invasive procedures (urethral dilation, catheterization, transurethral resection of prostate or cystoscopy). Twelve of those 28 patients had also urinary incontinence. Two patients had both GIS and GUS Grade 3 toxicity. There was no grade 4 GIS or GUS toxicity.

DISCUSSION

The classic prognostic factors for prostate cancer are clinical TNM stage, histological grade, GS and iPSA.⁸ These parameters are used to categorize patients into some risk groups and decide the appropriate treatment. In this study we prospectively evaluated the treatment results of our patients with prostate cancer in terms of OS, CSS, PSA-RFS and DMFS in each classical risk status and also we studied the other factors like TPC, PPC and PNI that have not been routinely used in predictive algorithm.

It was shown that higher GS is associated with greater likelihood of having non-organ confined disease, as well as a worse outcome after treatment of localized disease.⁹ In our study, the patients with $GS \geq 8$ had tendency to be in clinical T2c-T3b stage compared to be in clinical T1-2a stage. In $GS \geq 8$ group, the percentage of the patients with $PSA > 20$ ng/ml and with $PSA \leq 10$ ng/ml were 45% and 23%, respectively. These patients had decreased rate of OS, CSS, PSA-RFS and DMFS than $GS \leq 6$ and $GS 7$ patients in our study.

In LN positive patients, there is evidence to support attempts to control primary tumor¹⁰ and a systemic review concluded that in T3 and/or LN positive diseases the local therapy is an essential part of the optimal treatment.¹¹ When RT is combined with ADT in LN positive patients, retrospective data suggest excellent biochemical control rates at 5 and 10 years.¹² In RTOG 85-32 trial, LN positive patients that received whole pelvic RT (WPRT) with combined hormonal treatment, had better biochemical control rates at 5 and 9 years compared to WPRT only; 54% and 10% versus 33% and 4%, respectively. In our trial, although all of the outcomes were worse in LN positive patients compared to LN negative counterparts ($p=0.001$), there were only 5 deaths because of prostate cancer in LN positive patients. This may be explained by the pelvic RT, long ADT duration and short follow up time in this group of LN positive patients. Twenty seven of 29 LN positive patients in our study received ADT of ≥ 1 year. Observational series of external RT for LN positive prostate cancer

patients have suggested favourable outcomes after local therapy, with 10 -year CSS rates in the range of 60% and 85%.^{13,14} In our study due to low numbers of LN positive patients, we only report 5 year CSS rates of 80%. However we know that more patients and more follow-up time are required to compare our results with the other trials.

After radical prostatectomy (RP) or RT, there is limited data supporting the utility of biopsy surrogates of prostate volume like PPC and TPC for prediction of prognosis.¹⁵ The relation between PPC and biochemical relapse free survival (BFS) was explored after ADT¹⁶, RP¹⁶⁻¹⁸, after WPRT^{4,19,20} and brachytherapy.²¹⁻²⁴ Although the prognostic significance of PPC couldn't be demonstrated in some studies²², Yushen et al reported the prognostic value of PPC in intermediate and high risk patients with regard to CSS, BFS and DMFS.²⁵ Freedland et al reported that PPC in biopsy was an independent predictor of biochemical relapse and adverse pathological findings like higher T stage, higher GS and positive surgical margin following RP.²⁶ Briganti et al reported that PPC has a predictive value for estimating the lymphatic invasion in addition to PSA, clinical T stage and GS.²⁷ In Huang's study, higher PPC was associated with younger age, unfavourable risk factors like higher T stage, GS and PSA, presence of PNI and more aggressive treatment. Association of PPC with distant metastases (DM) and correlation of PPC with OS were reported in high risk patients.²⁸

More quantitative assessments of biopsy tumor volume, such as percentage of tumor volume (PCV) have been studied in the context of RP, brachytherapy, androgen deprivation therapy, External RT or combined treatments. These studies all suggested that the PCV is a more discriminating prognostic variable than the PPC.²⁹

In our study, higher PPC (>50%) and higher TPC ($\geq 50\%$) were all correlated with higher GS, PSA, T stage, prolonged ADT and presence of PNI ($p < 0.00$). Also we found that younger patients had tendency to have higher PPC and higher TPC. We could not find any relation between the age of patients and PNI. On univariate analysis we found a negative correlation between the extent of cores (PPC, TPC and PNI) and CCS, BFS and DMFS.

On multivariate analysis, we evaluated PPC, TPC, PNI, GS, PSA, T stage, risk groups and we obtained significant association between PSA-RFS and PPC ($p = 0.025$) and PSA > 20 ng/ml ($p = 0.002$) patients. When we exclude PPC from the analysis, TPC also significantly affects the PSA-RFS ($p < 0.001$). We found that TPC $\geq 50\%$ patients had higher GS, PSA, T stage, PNI positivity and are in high risk group compared to PPC >50 patients. But why couldn't we find the predictive value of TPC when they were both calculated in same Cox analysis? We think that although the patients with TPC $\geq 50\%$ had poorer factors but could not be able to indicate significance in Cox analysis, the predictive value of PPC should have been more valuable. This is contrary to Vance's study²⁹ where they reported TPC as a prognostic factor for CSS, PSA-RFS and DMFS. However in their study PPC failed to show an advantage in multivariate analysis. In that study they evaluated the TPC volumes in four quartiles including < 2.5%, < 10%, < 25% and $\geq 25\%$ TPC. They reported that the NCCN high risk patients with TPC < 25% had better clinical outcomes than the high risk group with TPC $\geq 25\%$. Similarly the patients with Gleason score 8-10 and high TPC had worse outcomes than the patients with Gleason score 8-10 and low TPC. In our study we grouped TPC into TPC < 50% and TPC $\geq 50\%$. Although we found the similar effect of TPC, our large ranges of 50% were probably less reliable to make more precise prognostic classification in comparison to Vance's study.

In RTOG 92-02 randomized trial that studied optimal duration of ADT, patients received 4 months of goserelin acetate and flutamid 2 months before and after RT. RT was applied to the prostate and pelvic LNs and then prostate was boosted to a total dose of 65-70 Gy. Patients then were randomized to no further therapy or 2 years goserelin acetate. Ten years of updated results of the study showed that CSS, PSA-RFS, local control and DMFS were all in favour of long term ADT. They also found OS advantage specific to GS 8-10 group that used long term ADT.³⁰ In EORTC phase III trial RT versus RT plus ADT was compared. External RT was delivered as in RTOG 92-02 study and hormonal therapy consisted of goserelin acetate for 3 years beginning on the first day of RT. In the updated

results OS, PSA-RFS and DMFS were statistically better in the combined therapy than only RT arm.³¹ These trials showed that the addition of ADT to conventional dose RT resulted in clear improvement in treatment outcomes like OS, BFS and DMFS.

It is also known that a BED of ≥ 150 Gy resulted in a 92% freedom from biochemical failure versus 62% with BED < 150 Gy. The role of ADT with optimal dose escalation should be defined. In our study, high risk patients that used ADT < 1 years had better 5 years OS ($p = 0.02$), CSS ($p = 0.05$), PSA-RFS ($p = 0.01$) and DMFS ($p = 0.07$). Forty-four percent of patients using long term ADT were the patients with Gleason score 8-10. When we compared our study with RTOG and EORTC trials, the duration of hormonal therapy might be shorter and also only 6% of the patients had pelvic RT. Our RT dose was higher than their conventional RT doses. Stock et al reported excellent results with 9-12 months of ADT combined with high doses of external RT plus brachytherapy.³² The role of 6 months of ADT with high doses of RT is being investigated in RTOG 0815 randomized trial.³³

Radiation induced proctitis includes symptoms like rectal pain, diarrhea, rectal bleeding, increased frequency of movements and urgency. The frequency of proctitis after 3D CRT of localized prostate cancer is 5-20%.^{34,35} In a multicenter trial where 450 patients were treated by 3D CRT, the rate of Grade 2 and Grade 3 late rectal side effects was reported to be 21% and 3%, respectively.³⁶ Zelefsky reported Grade 3 proctitis which required blood transfusion or laser coagulation only in 15 patients (1%). It should be considered that they used either intensity modulated radiotherapy (IMRT) or 3DCRT in their trial and they stated a significant decline in the incidence of Grade ≥ 2 GI toxicities with IMRT.³⁷ In our study 5% of the patients had Grade 3 late rectal toxicity which is higher than Zelefsky's trial. The possible reason of high Grade 3 toxicity in our study may be the RT modality as we treated all patients with 3DCRT only. The other treatment related toxicity is faecal incontinence that is thought to be caused by radiation exposure of the ano-rectum. The precise mechanism is not known and the relationship between dose volume parameters and the severity of faecal incontinence symptoms has

not been fully established.³⁸ AIRO PROS 0102 trial reported a rate of 10.9% Grade ≥ 1 faecal incontinence.³⁹ In our study, faecal incontinence was reported only in one patient. This low rate may arise from the missing data or insufficient feedback because of socio-cultural level of patients.

In this study we reported our treatment results in the 3DCRT era. 3DCRT and ADT combination is an effective treatment modality with acceptable toxicities in patients with prostate cancer. However it is known that IMRT has the ability to deliver higher radiation doses to the target while sparing the normal adjacent structures. Thus we now treat prostate cancer patients with IMRT to a total dose of 76 Gy. Additionally, it is clear that PPC, TPC and PNI are independently important as prognostic markers for prostate cancer. These factors should also be incorporated to formal risk group classification to select the appropriate treatment for patients. Using smaller cut off points for TPC and PPC may increase the sensibility of these markers in assessing the prognosis.

REFERENCES

1. Pilepich MV, Winter K, John MJ, et al. Phase III radiation therapy oncology group (RTOG) trial 86-10 of androgen deprivation adjuvant to definitive radiotherapy in locally advanced carcinoma of the prostate. *Int J Radiat Oncol Biol Phys* 50: 1243-1252, 2001.
2. Laverdiere J, Nabid A, De Bedoya LD, et al. The efficacy and sequencing of a short course of androgen suppression on freedom from biochemical failure when administered with radiation therapy for T2-T3 prostate cancer. *J Urology* 2004, 171: 1137-1140, 2004.
3. Denham JW, Steigler A, Lamb DS, et al. Short-term neoadjuvant androgen deprivation and radiotherapy for locally advanced prostate cancer: 10-year data from the TROG 96.01 randomised trial. *Lancet Oncol* 12: 451-459, 2011.
4. D'Amico AV, Schultz D, Silver B, et al. The clinical utility of the percent of positive prostate biopsies in predicting biochemical outcome following external-beam radiation therapy for patients with clinically localized prostate cancer. *Int J Radiat Oncol Biol Phys* 49: 679-684, 2001.
5. Bastacky SI, Walsh PC, Epstein JI. Relationship between perineural tumor invasion on needle biopsy and radical prostatectomy capsular penetration in clinical stage B adenocarcinoma of the prostate. *Am J Surg Pathol* 17: 336-341, 1993.

6. D'Amico AV, Whittington R, Malkowicz SB, et al. Biochemical outcome after radical prostatectomy, external beam radiation therapy, or interstitial radiation therapy for clinically localized prostate cancer. *JAMA* 280: 969-974, 1998.
7. Cox JD, Stetz J, Pajak TF. Toxicity criteria of the Radiation Therapy Oncology Group (RTOG) and the European Organization for Research and Treatment of Cancer (EORTC). *Int J Radiat Oncol Biol Phys* 31: 1341-1346, 1995.
8. Dirix P, Joniau S, Van den Bergh L, et al. The role of elective pelvic radiotherapy in clinically node-negative prostate cancer: a systematic review. *Radiother Oncol* 110: 45-54, 2014.
9. Ellis CL, Partin AW, Han M, Epstein JI. Adenocarcinoma of the prostate with Gleason score 9-10 on core biopsy: correlation with findings at radical prostatectomy and prognosis. *J Urol* 190: 2068-2073, 2013.
10. Messing EM, Manola J, Yao J, et al. Immediate versus deferred androgen deprivation treatment in patients with node-positive prostate cancer after radical prostatectomy and pelvic lymphadenectomy. *Lancet Oncol* 7: 472-479, 2006.
11. Verhagen PC, Schroder FH, Collette L, Bangma CH. Does local treatment of the prostate in advanced and/or lymph node metastatic disease improve efficacy of androgen-deprivation therapy? A systematic review. *Eur Urol* 58: 261-269, 2010.
12. Crehange G, Chen CP, Hsu CC, et al. Management of prostate cancer patients with lymph node involvement: a rapidly evolving paradigm. *Cancer treat rev* 38: 956-967, 2012.
13. Pilepich MV, Winter K, Lawton CA, et al. Androgen suppression adjuvant to definitive radiotherapy in prostate carcinoma-long-term results of phase III RTOG 85-31. *Int J Radiat Oncol Biol Phys* 61: 1285-1290, 2005.
14. Robnett TJ, Whittington R, Malkowicz SB, et al. Long-term use of combined radiation therapy and hormonal therapy in the management of stage D1 prostate cancer. *Int J Radiat Oncol Biol Phys* 2002, 53: 1146-1151.
15. Epstein JI. Prognostic significance of tumor volume in radical prostatectomy and needle biopsy specimens. *J Urol* 186: 790-797, 2011.
16. Normand G, Celhay O, Briffaux R, et al. Percentage of positive biopsy cores at the onset of hormone therapy for prostate cancer: prognostic significance. *Urol Int* 83: 160-165, 2009.
17. D'Amico AV, Whittington R, Malkowicz SB, et al. Clinical utility of the percentage of positive prostate biopsies in defining biochemical outcome after radical prostatectomy for patients with clinically localized prostate cancer. *J Clin Oncol* 18: 1164-1172, 2000.
18. Freedland SJ, Aronson WJ, Terris MK, et al. The percentage of prostate needle biopsy cores with carcinoma from the more involved side of the biopsy as a predictor of prostate specific antigen recurrence after radical prostatectomy: results from the Shared Equal Access Regional Cancer Hospital (SEARCH) database. *Cancer* 98: 2344-2350, 2003.
19. Spalding AC, Daignault S, Sandler HM, et al. Percent positive biopsy cores as a prognostic factor for prostate cancer treated with external beam radiation. *Urology* 69: 936-940, 2007.
20. Wong WW, Schild SE, Vora SA, Halyard MY. Association of percent positive prostate biopsies and perineural invasion with biochemical outcome after external beam radiotherapy for localized prostate cancer. *Int J Radiat Oncol Biol Phys* 60: 24-29, 2004.
21. Kestin LL, Goldstein NS, Vicini FA, Martinez AA. Percentage of positive biopsy cores as predictor of clinical outcome in prostate cancer treated with radiotherapy. *J Urol* 168: 1994-1999, 2002.
22. Pe ML, Trabulsi EJ, Kedika R, et al. Effect of percentage of positive prostate biopsy cores on biochemical outcome in low-risk PCa treated with brachytherapy or 3D-CRT. *Urology* 73: 1328-1334, 2009.
23. Merrick GS, Butler WM, Galbreath RW, et al. Relationship between percent positive biopsies and biochemical outcome after permanent interstitial brachytherapy for clinically organ-confined carcinoma of the prostate gland. *Int J Radiat Oncol Biol Phys* 52: 664-673, 2002.
24. Rossi PJ, Clark PE, Papagikos MA, et al. Percentage of positive biopsies associated with freedom from biochemical recurrence after low-dose-rate prostate brachytherapy alone for clinically localized prostate cancer. *Urology* 67: 349-353, 2006.
25. Qian Y, Feng FY, Halverson S, et al. The percent of positive biopsy cores improves prediction of prostate cancer-specific death in patients treated with dose-escalated radiotherapy. *Int J Radiat Oncol Biol Phys* 81: e135-142, 2011.
26. Freedland SJ, Aronson WJ, Terris MK, et al. Percent of prostate needle biopsy cores with cancer is significant independent predictor of prostate specific antigen recurrence following radical prostatectomy: results from SEARCH database. *J Urol* 2003, 169: 2136-2141.
27. Briganti A, Karakiewicz PI, Chun FK, et al. Percentage of positive biopsy cores can improve the ability to predict lymph node invasion in patients undergoing radical prostatectomy and extended pelvic lymph node dissection. *Eur Urol* 51: 1573-1581, 2007.
28. Huang J, Vicini FA, Williams SG, et al. Percentage of positive biopsy cores: a better risk stratification model for prostate cancer? *Int J Radiat Oncol Biol Phys* 83: 1141-1148, 2012.
29. Vance SM, Stenmark MH, Blas K, et al. Percentage of cancer volume in biopsy cores is prognostic for prostate cancer death and overall survival in patients treated with dose-escalated external beam radiotherapy. *Int J Radiat Oncol Biol Phys* 83: 940-946, 2012.
30. Horwitz EM, Bae K, Hanks GE, et al. Ten-year follow-up of radiation therapy oncology group protocol 92-02: a phase III trial of the duration of elective androgen deprivation in locally advanced prostate cancer. *J Clin Oncol* 26: 2497-2504, 2008.

31. Bolla M, Van Tienhoven G, Warde P, et al. External irradiation with or without long-term androgen suppression for prostate cancer with high metastatic risk: 10-year results of an EORTC randomised study. *Lancet Oncol* 11: 1066-1073, 2010.
32. Ko EC, Liu JT, Stone NN, Stock RG. Association of early PSA failure time with increased distant metastasis and decreased survival in prostate brachytherapy patients. *Radiother Oncol* 110: 261-267, 2014.
33. Cheney MD, Chen MH, Zhang D, et al. Greatest percentage of involved core length and the risk of death from prostate cancer in men with highest Gleason score ≥ 7 . *Clin Genitourin Cancer* 12: 234-240, 2014.
34. Nichol A, Chung P, Lockwood G, et al. A phase II study of localized prostate cancer treated to 75.6 Gy with 3D conformal radiotherapy. *Radiother Oncol* 76: 11-17, 2005.
35. Rancati T, Fiorino C, Gagliardi G, et al. Fitting late rectal bleeding data using different NTCP models: results from an Italian multi-centric study (AIROPROS0101). *Radiotherapy and oncology : journal of the European Society for Therapeutic Radiology and Oncology* 73: 21-32, 2004.
36. Goldner G, Tomicek B, Becker G, et al. Proctitis after external-beam radiotherapy for prostate cancer classified by Vienna Rectoscopy Score and correlated with EORTC/RTOG score for late rectal toxicity: results of a prospective multi-center study of 166 patients. *Int J Radiat Oncol Biol Phys* 67: 78-83, 2007.
37. Zelefsky MJ, Levin EJ, Hunt M, et al. Incidence of late rectal and urinary toxicities after three-dimensional conformal radiotherapy and intensity-modulated radiotherapy for localized prostate cancer. *Int J Radiat Oncol Biol Phys* 70: 1124-1129, 2008.
38. Maeda Y, Hoyer M, Lundby L, Norton C. Faecal incontinence following radiotherapy for prostate cancer: a systematic review. *Radiother Oncol* 98: 145-153, 2011.
39. Tomatis S, Rancati T, Fiorino C, et al. Late rectal bleeding after 3D-CRT for prostate cancer: development of a neural-network-based predictive model. *Phys Med Biol* 57: 1399-1412, 2012.

Correspondence

Dr. Fadil AKYOL

Hacettepe Üniversitesi Tıp Fakültesi

Radyasyon Onkolojisi Anabilim Dalı

06100, Sıhhiye, ANKARA / TURKEY

Tel: (+90-312) 305 29 00

e-mail: hakyol@hacettepe.edu.tr